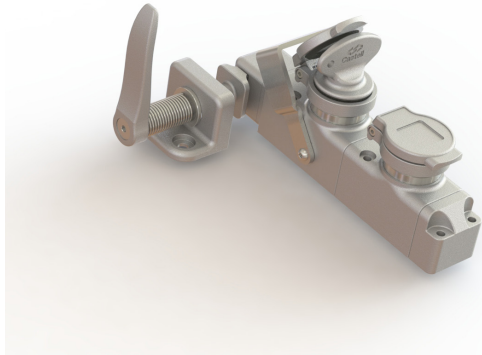


TYPE DS Access Interlock



Castell Type DS access interlocks provide a physical barrier to either partial or full body access to a hazardous area. Mounted vertically, its slim design can be easily incorporated into machine guarding gates and access points.

The Type DS interlock is a modular interlock that has at least two parts; a main body with one cylinder and a latch bolt. When the latch bolt is separated from the main body, the key(s) is trapped in the lock.

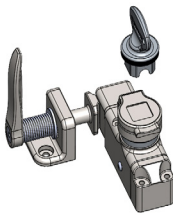
When the door on which the interlock latch bolt is mounted, is properly closed, the latch bolt can be inserted into the main body and the key(s) can be turned and released. The modular capability of the Type DS provides the flexibility to add multiple cylinders based on the safety application needs. A multiple cylinder Type DS also offers a forced key removal feature which ensures that when the door is opened, the “personnel” key is released and can be put in the pocket of the maintenance person, minimizing the risk that the door cannot be closed and locked while the personnel key is on the person.

OPERATION

Castell Type DS interlocks are mechanically operated and suitable for access to a hazardous area.

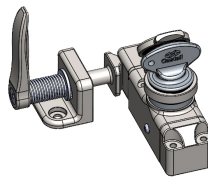
1

Key is released, latch bolt is engaged, ensuring access point is locked closed.



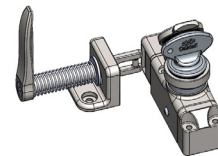
2

Insert and turn key, which will disengage latch bolt and trap key.



3

Latch bolt is disengaged, access point is open, and key is trapped.




Examples Key Free - Bolt Trapped

For multiple cylinder interlocks, all missing keys must be inserted and turned before any trapped keys can be released.

TYPE DS Access Interlock

USAGE

Castell Type DS access interlocks should be used to allow safe access into potential hazardous areas. Castell Type DS access interlocks can be used for partial (single key) or full body access points on hinged doors. For full body access, a multiple cylinder interlock is recommended. This allows a personnel key to be released and kept on the person(s) performing maintenance.


 Castell Type DS interlocks should be utilised in situations where the door and door-frame have some misalignment.


No hazardous substances were used in the manufacturing of the product. The product can be disposed of in standard waste receptacles.


INSTALLATION


Bolt the Type DS latch bolt to the door or door frame, then when the door/gate is closed, the latch bolt engages properly with the Type DS lock body.

The Type DS access lock is part of our HD series (stainless steel) interlocks and is not sold with keys. Keys must be ordered separately and may be required during the installation process.

 For all interlock systems to maintain system integrity, additional keys must be removed from the system and destroyed or retained by a responsible person. There should only be enough keys to operate the interlock system sequentially. Castell will not be responsible for extra keys left in the interlock system.

 All interlocks and interlock systems must be installed by a competent and qualified person who has read and understood these instructions. Please retain this document in your technical files.

 The access interlock and bolt should be mounted using anti-tamper fixing to prevent an authorising removal using m6 fixing/ using a trapped lock set to a torque of 5mm.

 This manufacture should be consulted when used in a corrosive environment is planned.

TYPE DS Access Interlock

MAINTENANCE

Castell trapped key interlocks should be periodically lubricated with a small amount of dry powder graphite. DO NOT use oil or grease of any type as these will collect dirt and impede the proper operation of the lock cylinder.

Periodic visual checks should be carried out by the site manager/safety officer.

Do not lubricate lock barrel with oil or grease, use CK Dry Powder Graphite if necessary



The interlock must be inspected every 6 months. Safety checks should include ensuring the keys and lock bolt can only be removed in the correct safety operating conditions (see page 1).



In case of defects being detected please contact your nearest Castell Support Department for further actions.

Please see Contact section for contact details.

TYPE DS Access Interlock

TECHNICAL DATA

Type DS	
Interlock Housing	Stainless Steel
Cylinder Housing	Stainless Steel
Plug/Inner Turn Shaft	Stainless Steel
Key Material	Stainless Steel
Key Style	Mim and Key
Latch Bolt	Stainless Steel
Type of Mounting	Main body is vertically mounted to the door frame and the latch bolt is mounted to the door using suitable fasteners. Refer to drawing for details.
Temperature Ratings	-40C (ice free) + 70C
Weight	1.85 KG
Operation Cycles	Suitable for +1 million cycles
B10d	1 million
Shock & Vibration	In accordance with BS EN 61373:2010 (Category 1 Class B) BS EN 50155:2017 Section 13.4.11
PL Rating	PLd

* Weight based on product with 1 cylinder, no key, accessories, or mounting hardware.

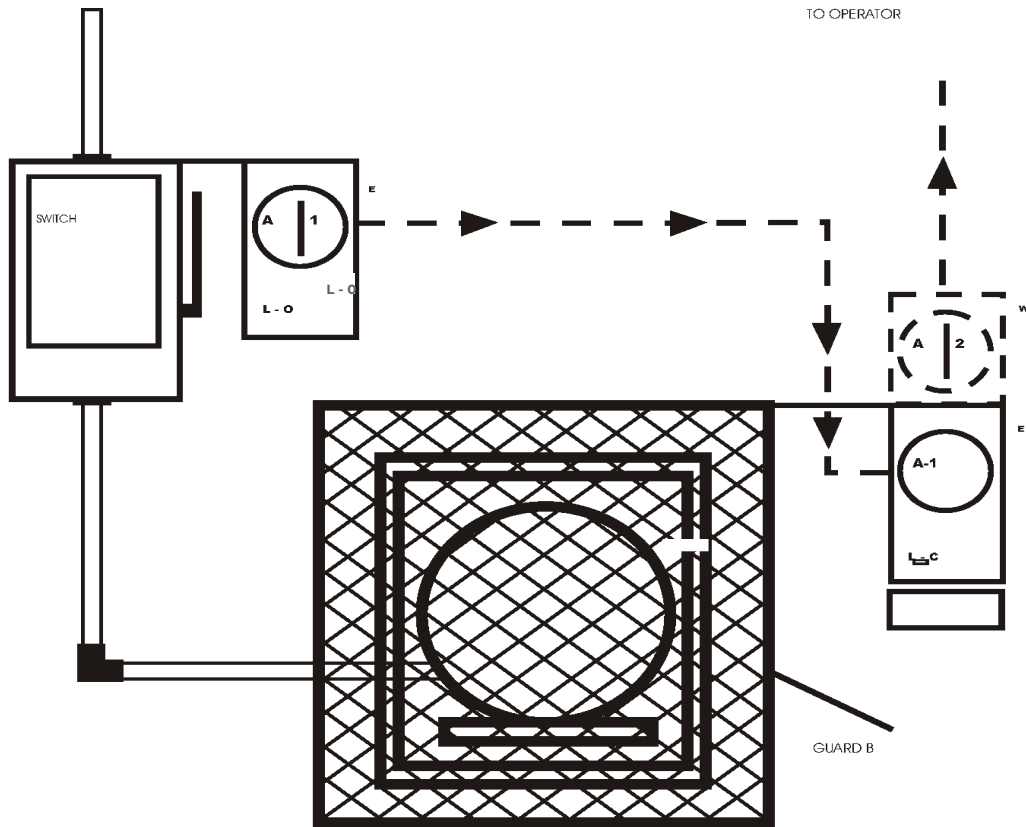
TYPE DS Access Interlock

APPLICATION WRITE UP

Castell Type DS interlocks are mechanically operated and suitable for access applications to a hazardous area. The interlock application is to prevent the opening of guard B when the power is on. Initial system status: Power is on. Guard B is locked closed and switch is in the closed position. Key A-1 is trapped in the bolt interlock on the switch.

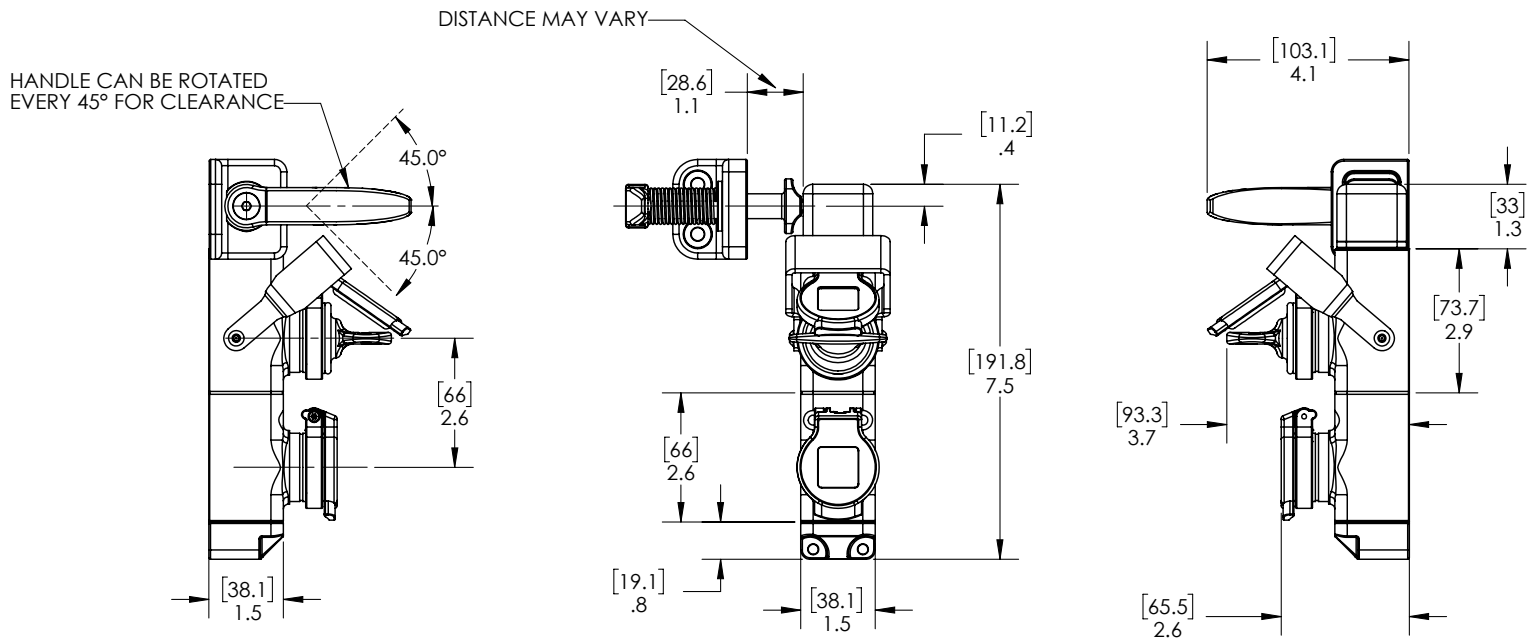
To gain access and begin maintenance on moving equipment, turn key A-1. Key A-1 is now free and switch contact are open. Insert Key A-1 into Type DS L-C (locked closed) interlock and unlock. Door/Guard B is now open and Key A-1 is now trapped in Type DS.

If this is full body access a multiple exchange key cylinder Type DS interlock is recommended. This allows for Key A-2 to be released and held with the person performing maintenance.



TYPE DS Access Interlock

DRAWING



TYPE DS Access Interlock



ORDER INFORMATION

1	2	3	4	5	6	7	8	9	10	11	12	13
S	D	S	-	F	S	S			-	-		-

1,2,3	Lock Type	Type DS Access Lock										
5,6,7	Cylinder Type	FSS= Castell FS Stainless										
8,9	Cylinder(s)	1 0	= E 1 CYL	Key Free/Door Locked	4 0	= EEEE 4 CYL	Keys Free/Door Locked					
		2 0	= EE 2 CYL	Keys Free/Door Locked	4 1	= WEEE 4 CYL	W-Key Trapped/Door Locked					
		2 1	= WE 2 CYL	W-Key Trapped/Door Locked	4 2	= WWEE 4 CYL	W-Keys Trapped/Door Locked					
		3 0	= EEE 3 CYL	Keys Free/Door Locked	4 3	= WWWE 4 CYL	W-Keys Trapped/Door Locked					
		3 1	= WEE 3 CYL	W-Key Trapped/Door Locked	W Key positions begin at latch bolt. For more than 4 cylinders, please consult sales.							
		3 2	= WWE 3 CYL	W-Keys Trapped/Door Locked								
12	Access Head Position	L = Left R = Right										

Tamperproof Hardware is shipped standard with all Type DS access locks

Forced Key Removable Feature:

- Forced key removable feature standard on multiple cylinder Type DS configured with W-Key(s) trapped when door is locked.
- Not available on multiple cylinder Type DS configured with key(s) free when door is locked.
- Not available on single cylinder Type DS



CONTACT INFORMATION

Castell Safety
 The Castell Building
 217 Kingsbury Road
 London, NW9 9PQ
 UK
 t: +44 (0)20 8200 1200
 f: +44 (0)20 8205 0055
 e: sales@castell.com

Kirk Key Interlock
 9048 Meridian Circle NW
 North Canton, OH 47720
 USA
 t: +1 800 438 2442
 f: +1 330 497 4400
 e: sales@kirkkey.com

SPS China
 2F, Building 63
 No 421 Hongcao Road, Xuhui District
 Shanghai PRC, 200233
 China
 t: +86 (0)21 6040 7398
 f: +86 (0)21 5453 0630
 e: chinasales@castell.com