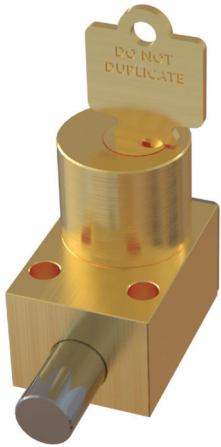


# Type FF

## Isolation Interlock



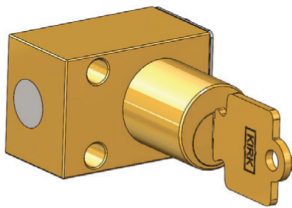
KIRK Type FF is the smallest of the KIRK bolt interlocks. It is a key operated mechanical interlock that is suitable for electrical switchgear. The standard unit comes with a stainless steel 1/2" diameter locking bolt with a throw or travel of 3/4". The locking bolt is used to inhibit or block the rotation or movement of operating handles or toggles of electrical switchgear. Many suppliers of switchgear equipment have mounting provisions available for KIRK interlocks.

### OPERATION

#### Type F key operated mechanical isolation interlock

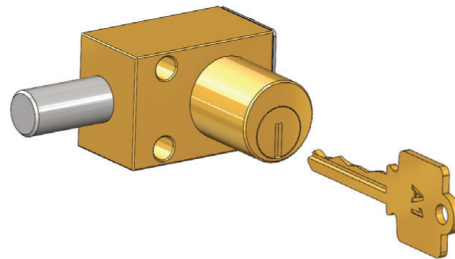
1

Key is trapped, bolt is withdrawn.



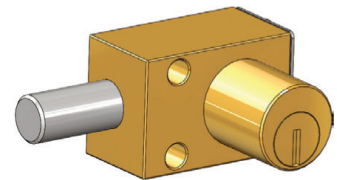
2

Change state of power, turn key, which extends bolt, releasing key



3

Bolt is now a physical barrier to switch and key is free to move to the next sequential interlock in the safety process.



The bolt is available in various lengths to suit each unique application. The travel of the bolt is always 3/4".

1 of 5

While every effort has been made to ensure the accuracy of the information provided, no liability can be taken for any errors or omission. Sentric Safety Group reserves the right to alter specifications and introduce improvements without prior notice.

U-Type FF-EN (05-26)

# Type FF


## Isolation Interlock



### USAGE

The KIRK Type FF is designed for smaller spaces and is the smallest of the KIRK bolt interlocks.

KIRK bolt interlocks should be used on equipment as a physical barrier to electrical switches, push buttons, or levers. KIRK bolt interlocks ensure that once the equipment is switched into the desired position as defined by the end user's safety process and following the operations of the interlock, the switch is now blocked from changing state until the procedure is reversed.

 KIRK isolation interlocks are not designed to serve as an access interlock into hazardous areas.

No hazardous substances were used in the manufacturing of the product. The product can be disposed of in standard waste receptacles.

### INSTALLATION

The KIRK Type FF is face mounted through the front of the housing. Proper installation of bolt interlocks is a critical element of a key interlock system. It is essential that each interlock be mounted so that the lock bolt cannot be extended unless the equipment on which it is mounted is in the proper position/condition. After installation of the bolt interlocks, the complete interlock system should be tested sequentially by person(s) familiar with the entire system, the key sequence, and its intended purpose. Any problems or discrepancies must be corrected prior to energization.

SD series (brass) interlocks are supplied with a key in each cylinder.

# Type FF

## Isolation Interlock



### TECHNICAL DATA

Type FF	SD Series
Interlock Housing	Brass
Cylinder Housing	Brass
Plug/Inner Turn Shaft	Brass
Key Material	Nickel-Silver
Key Style	7-Pin Tumbler
Lock Bolt	Stainless Steel
Type of Mounting	"Surface mounted using suitable fasteners. Refer to drawing for details."
Temperature Ratings	-65°F to +250°F
Weight*	.75 pounds

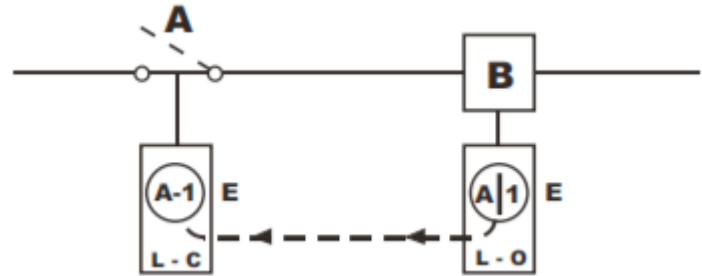
\* Weight based on product with 1 cylinder, 0" bolt length, no key, accessories, or mounting hardware

### APPLICATION

An example application is to prevent the opening of switch A when breaker B is closed.

Initial system status: Power is on and Switch A and Breaker B are in the closed position. Key A-1 is held in Breaker B Type FF interlock.

To begin maintenance of switchgear system, open Breaker B and turn key A-1 in L-O (locked open) Type FF bolt interlock on Breaker B to lock open. Key A-1 is now free. Insert key A-1 into L-C (locked closed) Type FF bolt interlock on Switch A and turn and unlock. Open Switch A and key A1- is now trapped.



3 of 5

While every effort has been made to ensure the accuracy of the information provided, no liability can be taken for any errors or omission. Sentric Safety Group reserves the right to alter specifications and introduce improvements without prior notice.

U-Type FF-EN (05-26)

# Type FF

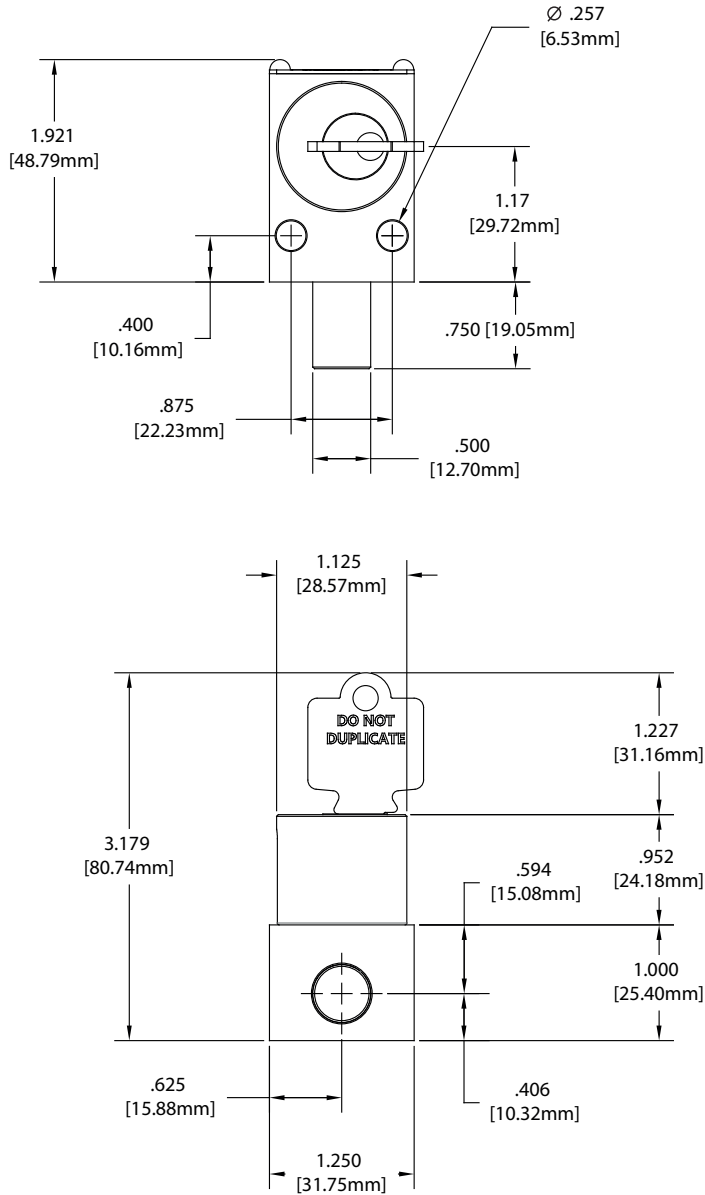
## Isolation Interlock



### DRAWING

Dimensions: in inches

### SD Series Type FF



4 of 5

While every effort has been made to ensure the accuracy of the information provided, no liability can be taken for any errors or omission. Sentric Safety Group reserves the right to alter specifications and introduce improvements without prior notice.

U-Type FF-EN (05-26)

# Type FF

## Isolation Interlock

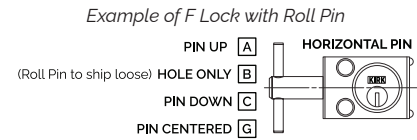


### ORDER INFORMATION

	1	2	3	4	5	6	7	8	9	10	11	12	13	14
Part number	K	F	F	-						S	-	-		

1	Series	K - SD Series (brass)												
5, 6, 7	<b>Bolt Projection</b> (in withdrawn position)  Maximum bolt projection for both series is 3"	0	0	0	0", 0 mm	1	0	0	1"	25.4 mm				
		0	2	5	1/4", 6.4 mm	1	2	5	1-1/4"	31.7 mm				
		0	3	7	3/8", 9.5 mm	1	3	7	1-3/8"	34.9 mm				
		0	5	0	1/2", 12.7 mm	1	5	0	1-1/2"	38.1 mm				
		0	6	2	5/8", 15.8 mm	2	0	0	2"	50.8 mm				
		0	7	5	3/4", 19.1 mm	3	0	0	3"	76.2 mm				
8, 9	Cylinder(s)	SD Series - max cylinders 1												
		1	0	= E 1 CYL										
		1	1	= W 1 CYL										
10	<b>Stamp Key Interchange</b> max. 5 alphanumeric characters	S = Yes												
13	<b>Mounting Bolts</b> see mounting bolt data sheet	- = No    T = Tamperproof												
14	<b>Roll Pin</b>	- = No    L = 3" Roll Pin												
												Minimum bolt length 0.37" required when adding a roll pin. Specify orientation at time of order, 'A' is default.		

**Roll Pin:**  
 Bolt locks can be ordered with a 3" pressed-in mechanical extension (Roll Pin). Roll Pins may be used when a standard bolt is not capable of interfering/blocking a device as intended.  
 By specifying a Roll Pin the 'Pin Up' (A) orientation will be chosen by default.  
 Please contact your Kirk representative for custom orientations.



Kirk Key Interlock Company LLC  
 9048 Meridian Circle, NW, North Canton, OH 44720, USA  
 Tel: +1 234.209.9301 Email: sales@kirkkey.com

5 of 5

While every effort has been made to ensure the accuracy of the information provided, no liability can be taken for any errors or omission. Sentric Safety Group reserves the right to alter specifications and introduce improvements without prior notice.

U-Type FF-EN (05-26)